

Local Development Framework for Bradford

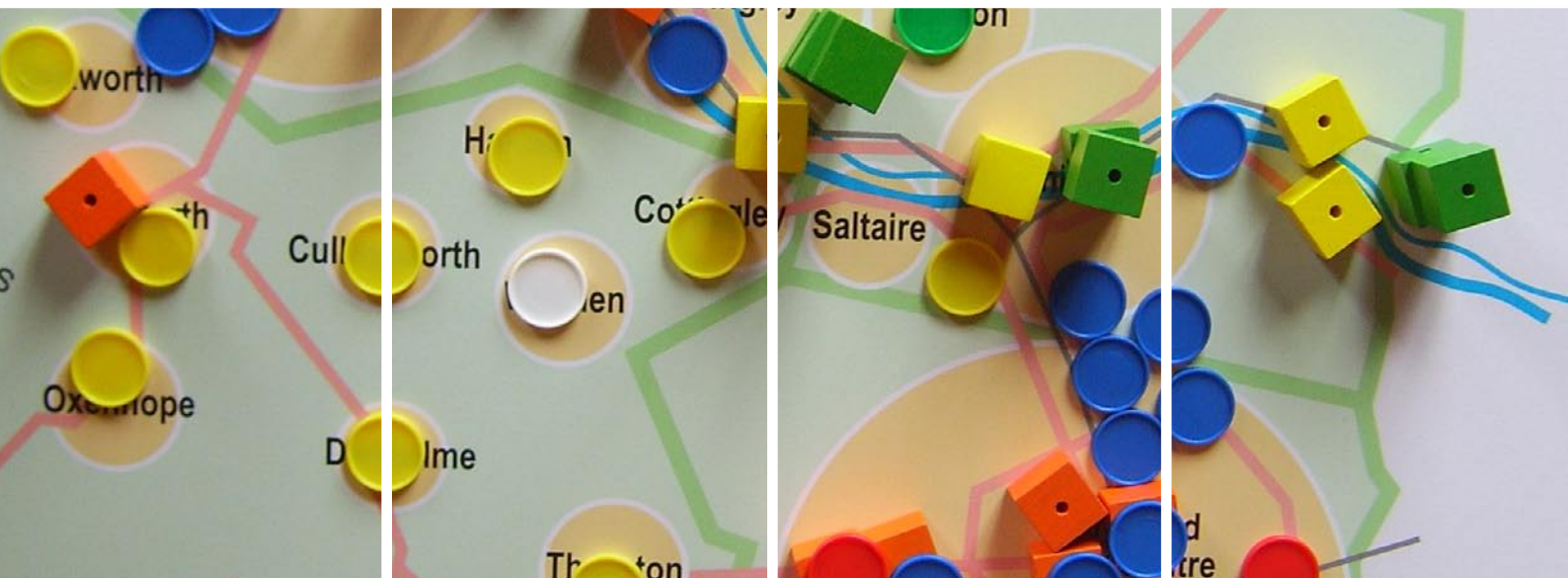
Core Strategy

Issues and Options

Consultation Event Log

Stakeholder Event : BRADFORD
Carlisle Business Centre

23 June 2007



CONTENTS	PAGE
1.0 EVENT OVERVIEW	1
2.0 LIST OF ORGANISATIONS & GROUPS INVITED	2
3.0 LETTER OF INVITE	12
4.0 BOOKING FORM	14
5.0 DELEGATE LIST	17
6.0 EVENT PROGRAMME	18
7.0 POWERPOINT PRESENTATION	19
8.0 PROMPT SHEET	25
9.0 FACILITATORS' NOTES	28
10.0 EVALUATION FORM	35
1.0 EVALUATION ANALYSIS	37

1.0 EVENT OVERVIEW

OBJECTIVES

- 1.1 The event had two broad objectives:
1. Raise awareness of the Core Strategy Issues and options for Bradford.
 2. Engage with key stakeholders in exploring the key issues and possible options for addressing them in the Core Strategy

The event focused on the Issues and Options Papers in particular *Topic Paper 2: The Spatial Vision and Strategy for Bradford*.

PARTICIPANTS

- 1.2 The Council targeted invites to local organisations and groups with an interest in the area. The letter of invite and a list of invitees can be found below. Participants were sent out copies of the relevant Topic Papers prior to the event, as well as the programme.
- 1.3 A total of 13 delegates plus 4 organisers and facilitators attended the event. The letter of invite, booking form and list of delegates can be found later in this report.

PROGRAMME

- 1.4 The event took the form of a half-day, which started with scene setting presentations followed by break out groups, which looked two key areas. A five minute DVD was used at the start of the presentation to set the scene.

DOCUMENTATION

- 1.5 Copies of the Issues and Options Reports were available on registration as well as the LDF Leaflet No2 on the Core Strategy. A delegate pack was produced which contained:
- Programme
 - Delegate list
 - Copies of each of the presentations

BREAK OUT GROUPS

- 1.6 The break out groups were designed to allow people to express their opinions on the future of the District, more specifically the main issues facing the area and then in the second session, where the majority of housing and employment development should be located.
- 1.7 There were three break out groups for each session. Each had a dedicated facilitator as well as a scribe to record the discussions.

EVENT EVALUATION AND FEEDBACK

- 1.8 Each delegate pack included an event evaluation form. Only one of the delegates completed a form. This has been analysed and used to inform later events.

2.0 LIST OF ORGANISATIONS AND GROUPS INVITED

14th Keighley (Haworth) Scout Group
 20th Bradford South Scout Group
 21st Bradford Guides, Brownies, Rangers
 21st Halifax (Queensbury) Boys Brigade
 2nd Riddlesden Scout and Guide Group
 34th Bradford South Scout Group
 36th Bradford South Scout Group
 68th Bradford South Scout Group
 8 Coombe Hill
 91st Bfd Guides Rainbows and Boys Brigade
 A A Planning Services
 A Khawaja Architecture Building ServicesLtd
 Abbeyfield House
 ABDRA
 ADAAB
 Addingham Bowling Club
 Addingham Civic Society
 Addingham Parish Council
 Advice and Training Centre
 African Community Support Project
 AFTOC
 AFTOC
 Agape
 Age Concern Bradford & District
 Ahmadiyya Movement Mosque
 Ahmadiyya Muslim Association
 Aire and Calder Rivers Group
 Aire Valley Conservation Society
 Aire Valley Neighbourhood Watch
 Aire Valley Rail Users Group
 Aire Valley Trade Force Ltd
 Aire Valley Venture Scout Unit
 Aire View Infant School
 Aireborough Planning Services
 Airedale and Craven Relate
 Airedale Beekeepers Association
 Airedale Cricket Club
 Airedale General Hospital
 Airedale Music Company
 Airedale NHS Trust Community Drugs
 Airedale Partnership
 Airedale Writers' Circle
 Al Huda Institute
 Albion Juniors AFC
 Aldersgate Estates Ltd
 Aldersgate Methodist Church
 Aldersgate Parent & Toddler Group
 Al-Faouq Associates
 All Saint's 60+ Group
 All Together
 Allerton Community Association
 Alley Cats Over 50's Line Dance Club
 Allison and MacRae
 Ambler Thorn Play Group
 Anchor Housing
 Anchor Housing Social Club
 Anchor Trust
 Ancient Monuments Society
 Anjuman E Haaideria
 Apna Ghar Community Association
 Apperley Bridge Development Residents
 Association
 Arthritis Care
 Asa Briggs Bowling Club
 Ashbourne Estate Community Association
 Ashdown Friendship Club
 Asian Business Forum
 Asian Disability Awareness Action in Bradford
 Asian Disability Network
 Asian Games Tournament
 Asian Trades Link
 Asian Women & Girls Centre
 Asian Women's Support Group
 Asian Youth and Cultural Organisation
 Asquith Properties
 Assisi Centre
 Assisi House Project
 Ataxia Self Help Group
 Atlas Primary
 Atlas Primary School
 Attock Park Residents Association
 Autistic Spectrum Disorder Team
 Azaad Kashmir
 Azad Cricket Club
 B P A
 Baby Sense and Toddler Gym
 BAFR
 Baildon & District Residents Association
 Baildon Action For Youth
 Baildon Civic Society
 Baildon Community Council
 Baildon Community Link
 Baildon Home Farm Trust
 Baildon Music Festival
 Baildon Peace Group
 Baildon Shared Futures
 Bangladesh Community Association
 Bangladesh Community Cultural Organisation
 Bangladeshi Youth Club
 Bank Top Harriers ARLFC
 Bankfoot Action Plan
 Bankfoot Darby and Joan Club
 Bankfoot Villa Football Club
 Banks Long & Co
 Barkerend Childrens Centre
 Barkerend Primary
 Barkerend Primary School
 Barton Willmore Planning Partnership
 Basement Gym
 BAZM-E-ILM-O-FUN
 Bazm-e-urdu Bradford
 BCA
 BCEP Community Urban Design
 BCFC Disabled Supporters Association
 BD4Family, Parents & Toddlers
 BD6 in Stitches
 Beckwith Design Associates
 Bedale 'Darby & Joan' Luncheon Club
 Beechcliffe Face
 Beldon Sports FC
 Belle Vue Girls School
 Ben Bailey Homes
 Ben Rhydding Action Group/Save Us Pub
 Bereavement Welfare Association
 Bierley Community Centre
 Bierley Walkers
 Bierley Youth Action Project
 Bi-Lingual Learning & Teaching Association

Bingley & Shipley Mencap
 Bingley Amateur Operatic Society
 Bingley Arts Centre
 Bingley Civic Trust
 Bingley CVS
 Bingley Environmental Transport
 Bingley Labour Party
 Bingley Society of St Vincent de Paul
 Bingley Voluntary Action
 Bioregional Quaintain Developments
 BISAN
 BKYP - Bradford & Keighley Youth Parliament
 Black Mountain Millennium Green/Brunel
 Community Association
 Blue Room properties
 BMEP & JAS
 Bob Jarman
 Bolling Special School
 Bolton Methodist Church
 Bolton Villas CC
 Bolton Villas Cricket Club
 Bolton Woods Community Association
 Borough of Pendle Council
 Bracken Bank Community Centre
 Brackenhill Primary School
 Bradford & Airedale Teaching Primary Care
 Trust
 Bradford & District Chamber of Trade
 Bradford & District Coalition of Disabled People
 Bradford & District Local Produce Markets
 Bradford & Ilkley College
 Bradford & Northern Housing Association
 Bradford Access Action
 Bradford Action for Refugees
 Bradford Aid for Kosova
 Bradford All Stars
 Bradford Alliance on Community Care
 Bradford and District Youth Offending Team
 Bradford Area Play Association
 Bradford Association of Visually Impaired
 People & Centre for Deaf People
 Bradford Bandits BMX Racing Club
 Bradford Botany Group
 Bradford Breakthrough Ltd
 Bradford Business Link
 Bradford Cathedral
 Bradford Centre Regeneration
 Bradford Chamber of Commerce & Industry
 Bradford City Disabled Supporters Association
 Bradford City Farm Association Ltd
 Bradford City Football Club
 Bradford City Womens Football Club
 Bradford Civic Society
 Bradford Click-On
 Bradford College
 Bradford Community Arts Ltd
 Bradford Community Broadcasting
 Bradford Community Environment Project
 Bradford Community Health Trust Leeds Road
 Hospital
 Bradford Community Housing Trust
 Bradford Council-Museums & Galleries Service
 Bradford Cyrenians
 Bradford Diocesan Office
 Bradford District Chamber of Trade
 Bradford District Senior Power
 Bradford Dudley Hill Under 12's
 Bradford Dynamos
 Bradford East Area Federation
 Bradford East District Venture Scout Unit
 Bradford Empowerment Project Information
 Shop
 Bradford Environmental Action Trust
 Bradford FSV
 Bradford Gymkhana Cricket Club
 Bradford Hate Crime Alliance
 Bradford Hospitals NHS Trust
 Bradford International Kite Festival Company
 Bradford Joint Training Board
 Bradford Ladies Hockey Club National League
 Bradford Local Communities FC
 Bradford Moor & Thornbury Forum
 Bradford Moor African Caribbean Young
 People's
 Bradford Moor Bowling Club
 Bradford Moor Community Primary
 Bradford Moor Consortium
 Bradford Moor Cricket Club
 Bradford Moor Housing Office
 Bradford Moor Neighbourhood Partnership
 Bradford Moor Youth & Community Project
 Bradford Moor Youth Sports Association
 Bradford Motor Education Project
 Bradford Night Stop
 Bradford North Retirement Group
 Bradford Older Carers' Association (Mencap)
 Bradford Older People's Alliance
 Bradford Ornithological Group
 Bradford Park Avenue Junior Football Club
 Bradford People First
 Bradford Punjabi Cultural Society
 Bradford Racial Equality Council
 Bradford Ramblers Association Group
 Bradford Real Nappy Project (BEAT)
 Bradford Repetitive Strain Injury Support
 Bradford Retail Action Group
 Bradford Scout/Guides Water Activities
 Bradford Secondary PRU
 Bradford Shalimar Cricket Club
 Bradford Sport & Recreation Association
 Bradford Tigers J F C
 Bradford Trades Union Council
 Bradford Trident
 Bradford University
 Bradford Urban Wildlife Group
 Bradford Vision
 Bradford Vision
 Bradford Vol Action Group for Disabled
 Persons
 Bradford Wildcats F C
 Bradford Women's Aid
 Bradford WRVS
 Bradford Youth Players
 Bradford Youth Service
 Bradleys Both Parish Council
 Bradnet
 Braithwaite & Guard House Community
 Association
 BRAVE Women's Support Group
 Brewster Bye Architects
 British Red Cross
 British Telecom
 BRITISH WHEELCHAIR SPORTS
 FEDERATION

British Wind Energy Association
 Bruce Barnes
 Brunel Housing
 Brunel Housing Association
 Brunel Support Works
 Brunel Tenants Forum
 BSCP
 BSRAPD
 BT (Bradford) Cricket Club
 Buildings Consultation Group
 Burger Court Nursing Home
 Burley Community Council
 Burley in Wharfedale Parish Council
 Burnett Planning & Development
 Buttershaw Action Group
 Buttershaw Bantams AFC
 Buttershaw Baptist Church
 Buttershaw Celtic FC
 Buttershaw Christian Family Centre
 Buttershaw High Rock Challenge Group
 Buttershaw High School
 Buttershaw Primary School
 Buttershaw Youth Centre
 Buttershaw Youth Football Club
 Buy a Child a Smile
 By Worth Craft Group
 BYAP
 BYCO
 BYDP
 Byron Primary School
 CABB
 Caddick Development
 Calder Architectural Services Limited
 Calderdale Metropolitan Borough Council
 CALEB
 Caleb Project
 Cambing Cricket Club
 Campaign For Real Ale
 Canterbury Youth Club
 Careers Bradford Ltd
 Carlton ARLFC
 Carlton-Bolling College
 Caroline Street Social Club
 Carrwood Centre
 Carrwood Primary School
 Carter Jonas
 Cathedral Centre Project
 Cathedral College Deputy Head
 Cavendish Primary School
 CB Richard Ellis Ltd
 CBMDC - Shipley East Regeneration
 CBMDC Youth Service
 Cellar Project
 Central Libraries
 Centre for Deaf People
 CHACH Association
 Chair - Newlands Plus Pact Board
 Chairobics Group
 Challenge College
 Charities Information Bureau
 Chattabox Holiday Club
 Checkpoint Women's Group
 Chief Planning Inspector
 Chris Thomas Ltd Outdoor Advertising
 Consultants
 Christians Against Poverty
 Churches Community Group
 City Centre Project
 City Lofts Development
 City of Bradford Esprit Diving Club
 City of Bradford YMCA
 City of Wakefield M D C
 City PCG
 City PCT - Manningham Clinic
 Clayton ARLFC
 Clayton Heights Community Group
 Clayton Heights Mother & Toddler Group
 Clayton Parish Council
 Clear Designs
 Clerk to Ilkley Parish Council
 Clockhouse Project
 CNet
 COM-B Computing Bradford
 Commission for Architecture and the Built Environment
 Community Cohesion Facilitation Service
 Community Development Worker
 Community Exercise Sessions
 Community Involvement Worker
 Community Network
 Community Safety Fire Department
 Community Safety Officer
 Community Service Volunteers
 Community Team Learning Disabilities
 Community Unity
 Community Works
 Communityworks Community Centre & Childrens Centre
 Cononley Parish Council
 Cooper Lane Primary School
 Cottingley Community Association
 Cottingley NAP
 Cottingley Theatre Club
 Council for British Archaeology
 Countryside Properties (Northern) Ltd
 Cowling Parish Council
 CPRE Bradford District
 CPRE West Yorkshire
 Craven Design Partnership
 Craven District Council
 Craven United FC
 Croft Hall Social Club
 Crofts Thornbury U13 Soccer Team
 Crosley Wood Residents Group
 Crosley Wood Tenants Action Group
 Crosley Wood Tenants Association
 Cross Roads Junior Football Club
 Cross Roads Junior Football Club
 Crossflatts Village Society
 Crossley Hall Primary School
 Cullingworth Parish Council
 Cullingworth Playsafe Committee
 Dacre, Son and Hartley
 David Beighton Architects
 David Wilson Estates
 Dawatul Islam
 DDA Task Team
 De-Ja-Vu
 Denholme Residents Action Group
 Denholme Town Council
 Denton Parish Council
 Department of Peace Studies (Bradford University)
 Depol Associates

Design Exchange
 DevPlan UK
 Dial Bradford
 Dialogue Communicating Planning
 Disability Advice Bradford
 Disability Advice Bradford
 DLA Architecture
 Dominican Association of Bradford
 Donaldsons
 DPDS Consulting Group
 Draughton Parish Council
 Drawtech
 Drighlington Parish Council
 Drovers Way Residents Group
 DTZ PIEDS Consulting
 Dudley Hill Imps
 Dudley Hill Rangers FC
 Dulay Seymour
 Dunsford Group for older People
 Early Years & Childcare Service (CBMDC)
 East Bierley Local History Group
 East Bowling Unity Pensioners Club
 East Morton Primary School
 Eastburn Playgroup/Eastburn Playing Fields
 Associa
 EBRO
 Eccleshill Baltic House
 Eccleshill Community Play Group
 Eccleshill Daycare Centre
 Eccleshill Football Club
 Eccleshill Karate Club
 Eccleshill Mechanics Institute
 Eccleshill Sports & Social Club
 Eccleshill Veterans Association & Bowling Club
 Eccleshill WMC
 Eccleshills Utd
 Eddisons Commercial
 Edwards Rainbow Centre
 Eldwick Village Society
 ELIM Church Centre
 English Heritage
 Environment Agency
 Environmental Taskforce
 Eric Barraclough
 Eric Breare Design Associates
 Esholt War Memorial Institute Bowling Section
 Estonian Club
 F and W Drawing Services
 Fabric - Forum for the Arts in Bradford
 Fagley Community Social Club
 Fagley Football Club
 Fagley Lane Action Committee
 Fagley Over 60's
 Fagley Sports and Social Club
 Fagley Tenants & Residents Association
 Fagley Youth and Community Centre
 Fairweather Green Working Mens Club
 Farcliffe Family Centre
 Farnhill Parish Council
 Farrell and Clark
 Faxfleet Residents Association
 Fearville Primary School
 Feversham Primary School
 Fibromyalgia Support
 First Bradford
 First Martyrs Social Centre
 Fitness First
 Forum Focussed on Pensioner Power
 Four Square Drawing Services
 Foxhill Guides
 Foxhill Primary School
 Foyer Development Manager
 Francis House Residents Association
 Freshstart
 Friends of Alma Nursery
 Friends of Bowling Park
 Friends of Bradford Youth Players
 Friends of Buck Wood
 Friends of Harold Park
 Friends of Lister Park (FLIP)
 Friends of Menston Primary School
 Friends of Newhall Park Primary School
 Friends of Peel Park
 Friends of Roberts Park
 Friends of Swain House
 Friends of Undercliffe Cemetary
 Friends of Woodside Primary School
 Friends of Wycliffe CE Primary
 Friends Together
 Frontline Initiative
 Fun Care Out of School Holiday Club-Step 2
 Young People's Health Project
 Future Energy Yorkshire
 Future For Women
 G R Morris Town Planning Consultant
 Game On (Leisure Club/Pool Centre)
 Garbe Real Estate Ltd
 Gateway Trinity Football Clu
 George Wimpey Northern Yorkshire Ltd
 Get up&go club
 Gildersome Parish Council
 Gingerbread Housing Project
 Gingerkidz
 Girlington Action Partnership
 Girlington Community Centre
 Girlington Primary
 Glenroyd Residents Association
 Glusburn Parish Council
 Goitside Regeneration Partnership
 Goldfinch Estates Ltd
 Good Companions Dancing Club
 Government Office for Yorkshire & The
 Humber
 GP Planning and Building Services
 Grange Girls Project
 Great Horton Youth Club
 Green Lane Primary School
 Greenfield
 Greenfield School
 Greengates Albion Football Club
 Greengates Allotment Society
 Greengates Juniors Football Club
 Greengates Liberal Club
 Greengates Primary School
 Greengates Veterans Association
 Greengates Veterans Bowls Association
 Greenhill Action Group
 Greenhill Friday Club
 Greenhill Resource Centre
 Greenway Amenity Group
 Greenwood Youth & Community Centre
 Gregory Properties
 Grosvenor Association
 Grove House Primary School

Guru Gobind Sikh Temple	Humdard
Gurunanak Sikh Temple	Hungarian Heritage
GVA Grimley	Hungarian Heritage
Hackney Carriage Proprietors	Idle & Thackley AODS
HALE	Idle Baptist Church and Community Centre
Halliday Clark	Idle C of E Primary School
Ham Group	Idle Corps
Hanfia Mosque	Idle Cricket Club
Hanover Close - Estate Office	Idle Hands Cross Stitch & Craft Club
Hanson School	Idle Independent Church
Harbourne Residential Care Centre	Idle Juniors
Harbourne Residents Group	Idle Parish Church
Harden Village Society	Idle Salvation Army
Harden Youth Club	Idle Tenants and Residents Association
Harrogate District Council	Idle Tide Committee
Haworth & Oxenhope District Bridleways Group	Idle Upper Chapel
Haworth Road Health Centre	Idle Village Tenants & Residents
Haworth Road Playgroup	Idle WMC
Haworth, Cross Roads & Stanbury Parish Council	Idle Working Mens Club & Institute
Haycliffe School	Idle YMCA
Haycliffe Special School	Idlethorpe Indoor Bowlers Club
Hayes Dobson Developers Ltd	ies
Hazel Beck Action Group	Ilkley Civic Society
Head of Town Planning Legislation Unit	Ilkley CVS
Healthy Heaton Group	Ilkley Design Statement
Heartsmart	Immaculate Conception Church
Heaton Old Peoples Entertainment and Social Centre	Indian Workers Association
Heaton Park Cricket Club	Indigo Planning Ltd
Heaton Utd	Inland Waterways Association
Heaton Woods Trust	Interfaith Centre
Help the Aged	Iqra Community Primary School
Hendford Drive & Otley Road T & R Assoc.	ISIS Project
Hepworth and Idle Cricket Club	Islamic Cultural and Educational Assoc.
High Fernley Primary School	Islamic Cultural Centre
High Park Rest Home	Islamic Relief Agency
Highgate News	Italian Senior Citizens Association
Highways Agency, Yorkshire & Humber	IT's Fun To Dance
Hindu Cultural Society	J C Redmile
HJ Banks and Co Ltd	J O Steel Consulting
Hollingwood Primary	J R Wharton Architect
Holme Christian Care Centre	Jamiat Ahl-E-Hadith
Holme United Reformed Church	Jamiyat Tabliga-ul-Islam
Holmewood Activity Centre	Jeff McQuillan Consulting
Holmewood Community Council	Jenny Lane Action Group
Holmewood Elderly Persons Forum	Jer Lane Cricket Club
Holmewood PACT	Jireh House Community Centre
Holmewood Raiders	Joseph Rowntree Charitable Trust
Holmewood United Football Club	Jubilee Outreach Yorkshire
Holy Trinity Church	Just Nails
Holybrook Centre	JW School of Dance
Holybrook Primary School	KADAL
Holyfamily RC Secondary School	Karmand Community Centre
Home Builders Federation	Katana Ju Jit Su Club
Home Safety Project Co-ordinator	Keighley Bangladeshi Youth Organisation
Home Start Shipley Co-ordinator	Keighley College
Homestart	Keighley Local Enterprise Agency
Homestart Bradford North	Keighley NE
Horton Bank Top Playgroup	Keighley PACT
Horton Grange	Keighley Town Council
Horton Grange Regeneration PACT	Keighley Voluntary Services
Horton Park Centre	Kelly Architectural Design
Housing Corporation, NE Region	Kensington Health Centre
How Planning	Ken's Leisure Centre
Hum Nuwa	Keyhouse Project
Human Neighbourhood Project	Khalifa Society
	Kidz Klub
	Kidzone Unit Manager

Killingham Primary School
 Kings Park Environment Focus Group
 Kirkgate Carers' Group
 Kirkgate Community Centre
 Kirkgate Studios & Workshops
 Kirklees Metropolitan Council
 Knowleswood Primary School
 LA Sante
 Laisterdyke Business & Enterprise
 Laisterdyke Centre
 Laisterdyke Cricket Club
 Laisterdyke Local History Group
 Laisterdyke Trinity Church
 Lancashire County Council
 Land & Development Practice
 Landmark Securities
 Landtask
 Laneshaw Bridge Parish Council
 Langtree
 Lapage Primary & Nursery School
 Lawcroft House Police Station
 Learning and Skills Council
 Leeds City Council
 Leeds Friends of the Earth
 Leeds/Bradford International Airport
 Legrams Lane U5's & Women's Centre
 Leith Planning Ltd
 Lesleys Hairstylist
 Let Wyke Breathe
 Liasterdyke Community Centre
 Lidget Green Community Partnership
 Lidget Green Primary
 Light of the World Community Centre
 Lilycroft Primary School
 Little Horton NAP
 Littman Robeson
 Low Moor & Wyke British Legion (Women's Section)
 Low Moor Local History Group
 Lower Fields Primary School
 Lowerfields School
 Lowerhouse Close Residents
 M Stephenson
 Making Space
 Manningham & Girdlington Heat Project
 Manningham & Girdlington Plus Project
 Manningham & Girdlington SRB
 Manningham Bloom
 Manningham Brotherhood Cricket Club
 Manningham FC
 Manningham Hockey Club
 Manningham Housing Association
 Manningham Library
 Manningham Mills Cricket Club
 Manningham Mills Sports Association
 Manningham NAP
 Manningham Parish Church
 Manningham Project
 Manningham Residents Association
 Manningham Sports Centre
 Manningham Youth Project
 Manor Property Group
 Maple Properties
 Marilyn Brichard
 Mark Brearley & Co Chartered Surveyors
 Masts
 Mauritian Society
 Mayfield and Clayhill Tenants Group
 McCann's DIY Centre
 McGinnis Development
 Meadowcroft Care Centre
 Menston Arts Club
 Menston Cares
 Menston Community Association
 Menston Parish Council
 Menston Singers
 Mental Health Service Users Group
 Mercury Communications
 Micklethwaite Village Society
 Midas Touch Asian Musical Group
 Middleton Parish Council
 Millan Centre
 Millan Centre
 Millennium Volunteers
 Milton House
 Minister of Clayton Heights Methodist Church
 Miriam Lord First School
 Miriam Lord Primary Shool
 Missol-e-sussi
 Mobile Operators Association
 Mobility Planning Group
 Monday Night Social Group Trust
 Morton Village Society
 Mothers Union
 Mr Simon Loveitt
 Ms Angela Maxwell
 Ms Husenara Sher & Javairia Sabir
 Multi Arts International
 Multiple Sclerosis Friends
 Mums's and Tots at Suttys
 Munch Bunch Toddlers Group
 Munchbunch Toddlers
 Muslim Cultural Association
 National Children's Home
 National Farmers Union
 National Federation of Women's Institutes
 National Media Museum
 Natural England
 Neighbourhood Element
 Neighbourhood Watch Co-ordinator
 Nesfield with Langbar Parish Council
 Netherlands Avenue School &Community Nursery
 Network East Action Trust
 Network Rail
 New Horizons
 New Horizons
 New Mason Properties
 New Virginia Tavern
 Newby House Tenants and Resident Group
 NEWCA
 Newhall Park Primary School
 Newholme
 Newlands (Pregnant Schoolgirl Unit)
 Newlands Local Enterprise LTD
 Newton Street Day Centre
 North Bradford Primary Care Trust
 North Bradford Retired Men's Forum
 North Bradford Retired Persons Action Group
 North Country Homes Group Ltd
 North Wing Community Centre
 North Wing Mission Community Centre
 Northcote C C
 Northern Orchestral Enterprises

Norwood Green Cricket Club	Queensbury Club for the Handicapped
Npower Renewables	Queensbury Community Association
Nuttall Yarwood and Partners	Queensbury Community Programme
Oakenshaw Residents Association	Queensbury Cricket Club
Oakenshaw Veterans Association	Queensbury Juniors
Oakworth Village Society	Queensbury Juniors ARLC
Oasis Complementary Therapy	Queensbury Juniors ARLFC
Oddfellows Arms Inn	Queensbury School
Odsal / Sedbergh Junior Rugby Club	Queensbury Support Centre
Odsal Residents Liasion Group	Queensbury Tykes Playgroup
Older People's Focus Group	Queensbury Youth & Community Centre
Olive Branch Trust	Quencher
Oltergraft Planning Services	RAABTHA
Omega Design	Rafike
On Track	Railtrack Property
Operational Manager - Manningham One Stop Centre	Ramblers Association
Ormond House Tenants Association	Ravenscliffe & Greengates Community Forum
Otley Road Tenants and Residents Forum	Ravenscliffe AFC
Otley Town Council	Ravenscliffe Community Association
Our Lady & St Brendan's Catholic Primary	Ravenscliffe Enterprise Girls Group
Oxenhope Parish Council	Ravenscliffe NHO
Oxenhope Social Club	Ravenscliffe Y & C Centre
Oxford Road R.A.	Ravenscliffe Youth & Community Centre
P.M Coote	Rawson Square Residents Association
PACT	RCDP
Pact Co-ordination Project	RCDP
PACT Team Leader	Red Beck Vale Neighbourhood Watch
Pakistani Women's Forum	Reevy Hill Primary School
Parent and Toddler Group	Regen 2000
Parkgate Design	Relay Recruitment Rovers
Parkland Primary School	Respite Care Unit
Parkside Playgroup	Rev Paul Hackwood
Parkside Residents Association	Rev Sarah Groves
Pastor Joe Link	Rev. John Nowell
Paul & Co	Reverend Kevin Tromans
PCT	Revolution Show Corps
Peacock and Smith	Richards & Co
Peel Park Primary School	RippleDay Treatment & Rehabilitation Centre
Penny Trepka	Robinson Architects
Physically Disabled Forum	Robinson Consulting Engineers
Piccadilly Estate management Ltd	Roshni Womens Group
Pizza Box	Rotary Club of Bingley
Planet Design Group	Rotary Club of Bingley and Airedale
Planning Potential	Rotary Club of Shipley
Planning Prospects Ltd	Rowan Avenue Neighbourhood Watch
PLAYCENTRE	Royal Town Planning Institute
Plot of Gold Ltd	Royds Community Association
Plumpton Park	Royds Healthy Living Centre
Pollard Park Residents Association	Royds Junior Rugby Club
Pondside Neighbours Group	Royds Rugby Club
Poplars Farm Primary School	Royds Rugby League Club
PPG Land Ltd	RSPB (Northern England region)
Presence FM	Runnymede Court
Priestley Centre for the Arts	Runnymede Court Social Club
Prince's Foundation	Russell Hall Primary School
Priority Sites Ltd	Ryecroft Community Centre
Project 5	Ryecroft Primary School
Punjabi Maehfil	S & R Carpets
Purlin Project	SAFE Project
QED	Safer City - Bradford & District
Quadrant Pact Board	Saltire Cricket Club
Quadrant Participation Project	Saltire Village Society
Queens Road B Allotment Association	Salvation Army
Queensbridge United AFC	Salvation Army Mans Hostel
Queensbury 18th Bfd Scout Group	Sandale Walk Community Centre
Queensbury Bell Ringers	Sanderson & Weatherall
	Sandy Lane Parish Council

Sangat Centre
 Scholemoor
 Scouts Association
 SEAFED
 Sedbergh Youth and Community Centre
 Sharing Voices Initiative
 Sherr Guru Ravidas Bhawan
 Shibden Head Primary School
 Shipley & Baildon Blind Welfare Assoc
 Shipley and Baildon Community
 Shipley and Baildon Volunteer Bureau
 Shipley and District Horticultural Soc
 Shipley CAB Gilstead Village Society
 Shipley College Library
 Shipley Red Cross
 Shipley Salvation Army
 Shipley Sure Start
 Shipley Volunteer Bureau
 Shipley Women's Aid
 Shipley/Baildon Save the Children Fund
 Shirley Manor Primary School
 Shop Mobility
 Shree Krishna Community Centre
 Signpost Project
 Silsden Town Action Group
 Silsden Town Council
 Simon Estates Ltd
 Slackside Parent and Toddler Group
 SNOB
 SNOOP
 Social Services Services to Children
 Society for the Protection of Ancient Buildings
 Soldiers and Sailors Association
 South and West Bradford Support Group
 South Asian Females Empowered (SAFE)
 South Bradford Ladies Football Club
 South Pennines association
 South Pennines Packhorse Trail Trust
 Southmere Primary School
 Spawforth Planning Associates
 SPEED Project
 Sport England
 Springdale Friendship Group
 Springfield Bike Project
 Springfield Junior Youth Drama Group
 Springfield Surgery
 Springwood Community Primary
 Springwood Primary
 St Aidan's Presbytery
 St Andrews Church
 St Andrews Methodist Church
 St Anthonys RC Church
 St Augustine's Art Project
 St Augustines Church
 St Brendans Church
 St Clare's Church
 St Clares Community Centre
 St Clares Improvement Group
 St Clares Pastoral Parish Council
 St Clares Sheltered Housing Complex
 St Clements Church
 St Clements Vicarage
 St Columba's Catholic Primary School
 St Cuthbert's Church
 St Francis Catholic Primary School
 St Francist Catholic Primary
 St Hugh's Centre
 St James Securities Ltd
 St James Wednesday Club
 St John The Baptist C of E Church
 St John the Divine
 St John The Evangelist Catholic Primary
 St Johns
 St John's C of E Primary School
 St Johns Church
 St John's Church Youth Club
 St Johns Day Centre
 St John's Luncheon Club
 St Johns U R C
 St Johns United Reformed Church
 St Luke's CE Primary School
 St Lukes Vicarage
 St Mary's Church
 St Mary's Residents Association
 St Matthew's C E Primary School
 St Matthews CE Primary
 St Matthew's Under Fives
 St Oswald's CE Primary
 St Patrick's Church
 St Pauls Vicarage
 St Peter's Catholic Primary School
 St Peters Presbytery
 St Philip's CE Primary School
 St Vincent de Paul Society
 St Wilfrid's Church
 St William's Catholic Primary School
 St Winifred's Parent & Toddler Group
 St Winifred's Hall Users Group
 St. John's Luncheon Club
 St. John's Under Fives
 St. Mary's Pre School Group
 St. Matthews Parents Group
 Star Keys Estate Agents, Valuers and Surveyors
 Starz Performing Arts Academy
 Steeton with Eastburn Parish Council
 Stockbridge Neighbourhood Development Group
 Stocks Lane Primary School
 Stocks Lane Rangers Football Club
 Stonebridge Court
 Suffa Tul-Islam Assoc.
 Summer Activities Committee
 Sunbridge Road Mission
 Support Team for Deaf Children
 Support Works
 Sure Start Manningham
 Sure Start Project
 Surestart
 Surestart BHT
 Surestart Manningham
 Surestart Manningham
 SURF
 Surti Muslim Khalifa Society
 Sutton Community Association
 Sutton Community Centre
 Sutton-in-Craven Parish Council
 Swain House Primary School
 SWG Planning Services
 Sycamore Court Tenants & Residents Association
 Taking Time - Memory Workshop
 Taleemul-Quran Society
 Telewest Communications

TFD Football Club
 TFD Youth and Community Centre
 Thackley AFC
 Thackley Cricket Club
 Thackley Football Club
 Thackley Methodist Church
 Thackley Primary School
 Thalassaemia & Sicklecell Support
 GroupProspect Juniors AFC
 The Albion Inn
 The Albion Sports Bar
 The Anchor Project
 The Award Centre
 The Balloon & Basket
 The Blue Pig
 The Bradford Mentor Group
 The Brewery Tap
 The British Horse SocietyYorkshire Riding
 Centre
 The City Centre Project
 The Commercial Inn
 The Coniston
 The Cricketers
 The Dog & Gun
 The Dominica Association
 The Emerson Group
 The Fountain
 The Garden History Society
 The Gateway
 The Gateway Centre
 The George
 The Georgian Group
 The Girlington Centre
 The Goldsborough
 The Grange Technology College
 The Great Northern
 The Green Man
 The Greenway Project C/O Duke of Edinburgh
 Awards Centre
 The Hare & Hounds
 The Hitching Post
 The Hog's Head
 The Horse & Farrier
 The Jigsaw Community Project
 The Junction
 The Kirkgate Centre
 The Lane Ends
 The Leisure Centre
 The Light of the World Community Centre
 The Lighthouse Outreach
 The Link Project Bradford & Airedale Mental
 Health Advocacy Group
 The Luncheon Club
 The Mail Corporation
 The Malt Kiln
 The Manor House
 The Moorfield Centre
 The New Inn
 The Old Bell Chapel
 The Peacemakers
 The Priestley
 The Priestley Centre for the Arts
 The Prince of Wales
 The Prospect
 The Prospect Hotel
 The Robin Hood
 The Rockwell Centre
 The Roebuck
 The Royal Hotel
 The Royal Oak
 The Salvation Army
 The Salvation Army in Wibsey
 The Salvation Army Over 60's Club
 The Seven Stars
 The Shoulder of Mutton
 The Sikh Temple
 The Smiling Mule
 The Springfield
 The Swing Gate
 The Theatres Trust
 The Thornbury Centre
 The Thursday Club
 The Tickhill Centre
 The Twentieth Century Society
 The Undercliffe Cemetary Charity
 The Victorian Society
 The Vine Trust
 The Wednesday Club
 The Wellesley Knitting ClubLow Moor Primary
 School PTFAParks Amateur Boxing Club
 The White Bear
 The White Hart
 Thornbury Cricket Club
 Thornbury Gardens and Allotments Association
 Thornbury Methodist Church
 Thornbury Youth & Community Association
 Thornbury Youth Centre
 Thornton Community Centre
 Thorpe Edge Community Forum & RCDP
 Thorpe Edge Community Project
 Thorpe Edge Jaguars St Hockey Team
 Thorpe Edge Women's Self Help Group
 Thorpe Methodist Church
 Tong School
 Tong Sports and Social Club
 Top Line Cricket Club
 Tots Unlimited- BD4 Family Centre
 Touchstone Project
 Town Hall Women's Guild
 Tradeforce Buildings
 Transco (North of England)
 Transport 2000
 Trawden Forest Parish Council
 Trident
 Trinity Methodist Church
 Turnaround Project
 Turner Associates
 Tyersal Action Group
 Tyersal FC
 Tyersal Park Junior Football Club
 Ukranian Church
 Undercliffe ARLFC
 Undercliffe Celtic
 Undercliffe Celtic Junior Football Club
 Undercliffe Cricket Club
 United Co-operatives Ltd
 Unity Cricket Club
 UnLtd - The Foundation for Social
 Entrepreneurs
 Upper Bolton Conservative Club
 Upper Thorpe Edge Tenants and Residents
 Assoc
 Urban Design
 Urban Splash

User Friendly
 Usman Welfare Fund
 V I Sahara Group
 Ventnor Youth Academy
 Veteran's Association
 Vicar Lane Housing Scheme/New Leaf
 Victim Support
 Victim Support Bradford District
 Victor Road Youth Club
 Victoria Conservative & Constitutional Club
 Victoria Hotel
 Victoria Rangers AFC
 Victoria Rangers ARLFC
 Vincent and Gorbing Ltd
 Vision Academy
 Visual Disability Services
 VJ Associates
 Voluntary Services Centre
 Wadsworth Parish Council
 Waggon & Horse
 Walton & Co
 Wannabe Performing Arts
 Wapping Association
 Waterton Park Asian Golf Society
 Webb Seeger Moorhouse Partnership
 Wedgewood & Community Nursery
 Wedgewood Special School
 Wesleyan Reform Church Luncheon Club
 West Central Area District Federation
 West Riding Suppl
 West Yorkshire Archaeology Advisory
 West Yorkshire Division Group
 West Yorkshire Ecology
 West Yorkshire Fire Service
 West Yorkshire Fire Service
 West Yorkshire LSC
 West Yorkshire Passenger Transport
 West Yorkshire Police Crime Prevention
 West Yorkshire Service
 Westbourne Mothers & Toddlers
 Westbourne Primary School
 Westfield Shoppingtown Ltd
 Weston Parish Council
 Westwood Sports Club
 Wharfe Valley Rail Users
 Whetley Primary School
 White Hart
 Wibsey ARLFC
 Wibsey Jets Football Team
 Wibsey Local History Group
 Wibsey Primary School
 Wibsey Rugby Club
 Wibsey WMC AFC
 Wilsden Good Neighbours Scheme
 Wilsden Parish Council
 Wilsden Village Hall
 Wilsden Village Society
 Windhill Food Coop
 Windhill Futures Project
 Women Zone
 Won Off Wonders
 Woodgate Baptist Church
 Woodhall Planning and Conservation
 Woodhouse & Springbank NF
 Woodhouse Grove Methodist Church
 Woodhouse Grove School
 Woodlands C E Primary School
 Woodlands Cricket Club
 Woodleigh Rest Home
 Woodside Primary School
 Woodside Village Centre
 Working Architects Co-Op Ltd
 Wrose Community Association
 Wrose Community Centre
 Wrose Community Centre
 Wrose Parish Council
 WRVS
 Wycliffe Tenants and Residents Assoc
 Wyke Amateur RLC
 Wyke ARLFC
 Wyke ARLFC
 Wyke Christian Fellowship
 Wyke Christian Fellowship Friendly Club Low
 Moor and Wyke
 Wyke Local History Group
 Wyke Manor and Community College
 Wyke Manor Community Centre
 Wyke Manor Community College
 Wyke Urban Village
 Wyke Youth Link
 YMCA
 York House Tenants
 Yorkshire and Humber Assembly
 Yorkshire and Northern Cultural Society
 Yorkshire British Waterways
 Yorkshire County Cricket Club
 Yorkshire Cricket Board
 Yorkshire Electricity
 Yorkshire Forward Regional Development
 Agency
 Yorkshire Martyrs Catholic College
 Yorkshire Planning Aid
 Yorkshire Union of Golf Clubs
 Yorkshire Water Services Ltd
 Yorkshire Wildlife Trust
 Young at Heart
 Young Muslim Organisation
 Young People's Health Infoline
 Young Womens Project
 Youth Base
 Youth Development Project

3.0 LETTER OF INVITE

City of Bradford Metropolitan District Council

www.bradford.gov.uk

Plans and Performance Service

8th Floor Jacob's Well
Manchester Road
BRADFORD
West Yorkshire BD1 5RW

Tel: (01274) 434050
Fax: (01274) 433767
Minicom: (01274) 392613
E-Mail: ldf.consultation@bradford.gov.uk
My Ref: TDP/P&P/LDF/CS/I&O
Your Ref:

13th April 2007

Dear Sir or Madam,

Bradford District Local Development Framework – Core Strategy Issues and Options Consultation Event

Bradford Council is currently preparing a Core Strategy this is an important document that will, once adopted, form part of the District's emerging development plan under the new Local Development Framework (LDF). The LDF will eventually replace the current development plan for the area, the Replacement UDP.

The Core Strategy will address the scale and distribution of development across the District over the next 15 – 20 years. In this respect it will set the strategy for the identification of broad locations for new housing, employment, and transport investment, as well as identify broad areas where development should be restrained. (The Core Strategy will not identify specific sites for development, but it will influence how development will be distributed across the District.) The Council is currently consulting on the Issues and Options and has published a series of eight topic papers in order to encourage discussion.

As part of the consultation the Council is holding a number of half-day Area Conferences, to discuss with local groups and other interested parties in more detail, issues relating to their area. You or your organisation have been invited to attend one of the following events:

- **Saturday 19th May 2007 at Victoria Hall, Saltaire from 9.00am – 2.00pm**
- **Wednesday 23rd May 2007 at Thornbury Centre, Bradford from 9.30am – 2.00pm**
- **Saturday 16th June 2007 at Riddings Hall, Ilkley from 9.00am – 2.00pm**
- **Saturday 23rd June 2007 at Carlisle Business Centre, Bradford from 9.00am – 2.00pm**

Lunch and refreshments will be provided.

Each event will include a number of short presentations to set the background to the new LDF Core Strategy. There will then be a number of workshops where a range of issues can be debated including:

- The scale and location of new development for housing, employment and leisure across the District, and the identification of broad areas where development should be restrained;
- The role of different settlements within the District;

Above all, however, this is an opportunity for those who are involved or have an interest in development planning matters to let us know what issues and policies you think the Core Strategy should be including and addressing.

If you wish to attend this event please fill in and return the enclosed booking form by **Friday the 4th May 2007**. Places are limited by the capacity of the venue so please book as soon as possible to avoid disappointment.

Further information on the Local Development Framework is available on the Council's website at www.bradford.gov.uk/planning by following the Local Development Framework link. Copies of the eight Core Strategy Issues and Options Topic Papers are available online and as reference copies in the Council's Planning Offices at Bradford, Ilkley, Keighley and Shipley. Hard copies of the topic papers will also be made available on request by contacting the LDF Group.

Even if you cannot attend the above event please feel free to send us your comments. The Council welcomes your views and will take these into account when developing the Preferred Options for the Core Strategy. Comments should be made in writing and sent to the following FREEPOST address:

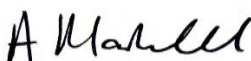
Bradford Local Development Framework
FREEPOST NEA 11445
PO Box 1068
BRADFORD
BD1 1BR

Alternatively, comments can be marked 'Core Strategy Issues and Options Consultation' and emailed to ldf.consultation@bradford.gov.uk. Comments should be received at the very latest by 6th July two weeks after the last Area Conference.

Please note that representations cannot be treated as confidential and a schedule of all representations received will be published

Should you require clarification on any of the above or further information please contact Andrew Marshall on the number above or my colleague Isha Ahmed on (01274) 434544.

Yours faithfully,



Andrew Marshall
Group Planning Manager

4.0 BOOKING FORM

City of Bradford Metropolitan District Council

www.bradford.gov.uk

CORE STRATEGY STAKEHOLDER CONSULTATION EVENTS

Bradford Council is currently producing a new strategic planning document, called a Core Strategy that will form part of its Local Development Framework. This crucial document will influence the scale and location of development to be provided for housing, employment, leisure and retail across the district for the next 10 – 20 years.

If you have an interest or role in shaping the future planning of the district, you are invited to attend one of the following events to discuss the issues and give us your views:

Saturday 19th May 2007
9.00am – 2.00pm
Victoria Hall, Saltaire

OR

Wednesday 23rd May 2007
9.30am – 2.00pm
Thornbury Centre, Leeds Old Road, Bradford

OR

Saturday 16th June 2007
9.00am – 2.00pm
Riddings Hall adjacent to Christchurch, Riddings Road, Ilkley

OR

Saturday 23rd June 2007
9.00am – 2.00pm
Carlisle Business Centre, Carlisle Road, Bradford

1. Your Details

Name:	
Address:	
Organisation:	
Telephone:	
Email:	

2. Attendance *(please tick which conference you wish to attend)*

I will be attending the event at Victoria Hall on the 19th May

I will be attending the event at Thornbury Centre on the 23rd May

I will be attending the event at Riddings Hall, Ilkley on the 16th June

I will be attending the event at Carlisle Business Centre on the 23rd June

3. Dietary needs (Lunch will be provided. Please tell us if you have any special dietary needs)

4. Any special requirements. Please list below anything else you may need. We will try our best to meet your needs so that you can fully participate on the day.

5. How to book.

To book a place please fill in this form and return to:

Isha Ahmed
Local Development Framework Group
8th Floor Jacob's Well
Manchester Road
Bradford
BD1 5RW

Or Email: ldf.consultation@bradford.gov.uk. Please head your email 'Core Strategy Area Conference'

Alternatively, please ring on (01274) 432253

Please let us know if you can attend by Friday 4th May as places are limited.

Further details of the conference and a map will be sent to you if you with your booking confirmation. Please note each conference will focus on the issues as they relate to a particular broad area namely; Bradford City, Airedale (and villages) and Wharfedale

5.0 DELEGATE LIST

Andrew Marshall	Group Planning Manager, CBMDC
Isha Ahmed	Team Leader, CBMDC
Tom Walton	Planning Officer, CBMDC
Ali Abed	Planning Assistant, CBMDC

Mr Azam	
Anne Ashworth	Children's Services
Mrs Barnes	Sheltered Housing
Kath Black	Pondside Neighbours Group
Tony Emmott	Heaton Woods Trust
Ralph Hewitt	Haworth Road Neighbourhood Association
Naweed Hussain	St Mary's Residents Association
Sarah Jennings	Friends of Lister Park
Junaid Karim	
Joy Leach	Friends of Lister Park
Jeff Redmile	Architectural Plans
Sheila Shanks	Trinity Methodist Church and Community Centre
V Shaw	Victor Road Community Project

6.0 EVENT PROGRAMME

City of Bradford Metropolitan District Council

www.bradford.gov.uk

**LOCAL DEVELOPMENT FRAMEWORK
CORE STRATEGY
ISSUES AND OPTIONS CONSULTATION EVENT
PROGRAMME**

23 JUNE 2007

CARLISLE BUSINESS CENTRE, BRADFORD

9.00	Registration and Refreshments.
9.30	Welcome and Introduction: Andrew Marshall (Group Planning Manager) setting out the aims of the event and proceedings
9.35	What is a Core Strategy: Andrew Marshall (Group Planning Manager) Short presentation introducing the Local Development Framework and Core Strategy. Including short DVD presentation
9.50	Questions and Introduction to Workshops
10.00	Workshop Session 1: Developing a vision for the Bradford District. Your chance to discuss what you think are the important planning issues facing the district. Have we identified the right issues? Have we missed any?
10.45	Refreshments break.
11.00	Workshop Session 2: Your chance to discuss the key housing and employment issues facing the District and potential approaches to them. This workshop will be based around the location of development and the roles of different settlements in meeting housing and employment land needs. It will also provide the opportunity to discuss the implications of any potential approach.
12.30	Feedback from workshop session 2
12.45	Summary and where next: Andrew Marshall will summarise key issues raised on the day and set out the next steps in developing the LDF Core Strategy.
13.00	Lunch



7.0 POWERPOINT PRESENTATION

City of Bradford Metropolitan District Council

www.bradford.gov.uk

BRADFORD LOCAL DEVELOPMENT FRAMEWORK

CORE STRATEGY – ISSUES & OPTIONS

Airedale Stakeholder Event

19 May 2007

Victoria Hall, Saltaire

Department of Regeneration

City of Bradford Metropolitan District Council

www.bradford.gov.uk

Welcome and Event Outline

City of Bradford Metropolitan District Council

www.bradford.gov.uk

Event Outline

- 9.30 Welcome and Introduction: Andrew Marshall (Group Planning Manager)
- 9.35 What is Core Strategy? Andrew Marshall (Group Planning Manager)
- 9.50 Questions and Introduction to workshops
- 10.00 Workshop Session 1. Developing the Vision
- 10.45 Refreshments break
- 11.00 Workshops Session 2 Meeting Development Needs
- 12.30 Feedback from workshop session 2
- 12.45 Summary and where next
- 13.00 Lunch

City of Bradford Metropolitan District Council

www.bradford.gov.uk

Event Aims and Objectives

- Raise awareness of the Local Development Framework in particular the core strategy and why it is important.
- Engage with local groups and organisations to explore the key issues facing the district over the next 10-20 years and the possible options for tackling them.

City of Bradford Metropolitan District Council

www.bradford.gov.uk

Event Aims and Objectives

Participation and engagement which ensures as far as practical the Core Strategy:

- Reflects the needs of the district and its communities
- Is technically robust and based on sound information
- Enjoys a broad consensus

City of Bradford Metropolitan District Council

www.bradford.gov.uk

Why is it Important? (DVD)

City of Bradford Metropolitan District Council

www.bradford.gov.uk

What is the Core Strategy?

City of Bradford Metropolitan District Council

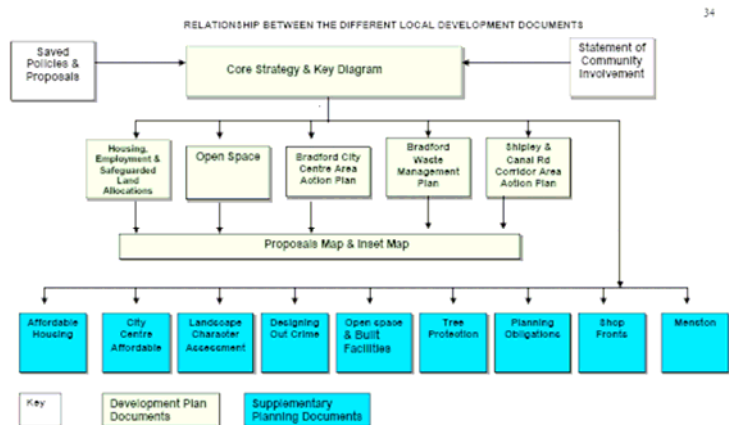
www.bradford.gov.uk

Presentation Themes

- Local Development Framework for Bradford
- The Process
- Core Strategy
- Current Consultation

Local Development Framework for Bradford

- **Adopted Replacement Unitary Development Plan (October 2005)**
- **Local Development Scheme for Bradford (Revised March 2007)**
- **Key Documents**
 - Core Strategy
 - Allocations (housing, employment and safeguarded land)
 - Open Space
 - City Centre Area Action Plan
 - Waste



Local Development Framework for Bradford

Regional Spatial Strategy for Yorkshire and the Humber:

- Sets out the broad approach to development and change in region
- Identifies the role of Bradford in Leeds City Region
- Sets the number of houses Bradford should provide for

LDF Process

Key stages of LDF preparation:

- Pre production
- Issues and options
- Preferred options
- Submission
- Examination
- Binding Report
- Adoption

City of Bradford Metropolitan District Council

www.bradford.gov.uk

Core Strategy

- First DPD sets out the 'big picture' through a spatial picture and vision
- Other LDF documents deliver a detailed approach in line with Vision, strategy and Core Policies
- Not site specific but needs to broad locations of development, change and restraint etc
- Succinct written statement with spatial policies supported by a key diagram

City of Bradford Metropolitan District Council

www.bradford.gov.uk

Core Strategy

- **Executive Report 6 February 2007**
- **Set of 8 Topic Papers**
 1. Introduction and Background
 2. The Spatial Vision and Strategy for Bradford
 3. Meeting the needs for dwellings in the District
 4. Economy and Jobs
 5. Transport and Accessibility
 6. Community Facilities
 7. Environment
 8. Waste Management

City of Bradford Metropolitan District Council

www.bradford.gov.uk

City of Bradford Metropolitan District Council

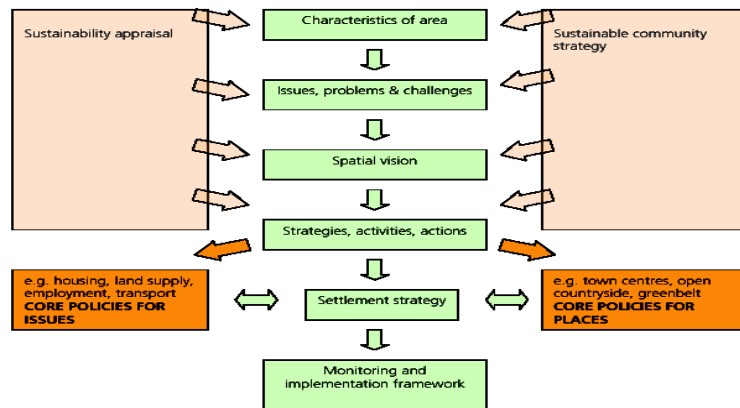
www.bradford.gov.uk

Vision (Part 1)

A sustainable District which ensures the well being of its residents and visitors through:

- A vibrant high skill economy fully integrated with the wider city region and northern economy focused on delivering the potential of the city of Bradford and Airedale and spreading those benefits to the whole district.
- Enhanced role of Bradford City as the key regional centre with the city centre a thriving sub-regional shopping, commercial and transport hub with a balanced and strong district wide economy

figure 1: core strategy key elements



City of Bradford Metropolitan District Council

www.bradford.gov.uk

Vision (Part 2)

- A Well connected District where everyone has access to decent affordable housing, jobs, health and community facilities.
- Continued protection and enhancement of its natural environment, heritage and diversity through high quality development and land management
- High quality new development, which contributes to the renaissance of the district which reinforces and builds on the existing character and promotes sustainable design

City of Bradford Metropolitan District Council

www.bradford.gov.uk

Consultation Process

- **Area Stakeholder Conferences (May/June)**
 - Airedale (19th May)
 - Bradford (23rd May and 23rd June)
 - Wharfedale (16th June)
- **Topic Stakeholder conferences**
 - Housing (22nd March)
 - Transport (28th June)
 - Waste (30th March)
 - Economy and jobs (linked to Economic strategy)

City of Bradford Metropolitan District Council

www.bradford.gov.uk

Consultation process

- **6 weeks from 16 February to 30 March (extended)**
- **Targeted consultees**
- **Partnerships and networks**
- **Difficult to reach groups**

City of Bradford Metropolitan District Council

www.bradford.gov.uk

Questions

City of Bradford Metropolitan District Council

www.bradford.gov.uk

Introduction to Workshops

City of Bradford Metropolitan District Council

www.bradford.gov.uk

Where Next?

- **Record and consider consultation feedback**
- **Consider new evidence**
 - Local Housing Assessment
 - Urban Potential Study
 - Flood Risk Assessment
 - Employment Needs Assessment
- **RSS Panel Report and Modifications**

City of Bradford Metropolitan District Council

www.bradford.gov.uk

Where next?

City of Bradford Metropolitan District Council

www.bradford.gov.uk

Where Next?

- **Feedback Workshops (Autumn)**
- **Refined development Options (Autumn)**
- **Preferred Options (January 2008)**
 - Identify chosen approach
 - Set out reasons for discounting other options
- **Housing and Employment Allocations DPD**
 - Issues and Options Spring 2008

City of Bradford Metropolitan District Council

www.bradford.gov.uk

Web Information

- **Council general planning**
www.bradford.gov.uk/planning
-
- **Bradford Local Development Framework**
www.bradford.gov.uk/environment/land_and_premises/local_development_framework/
- **Department of Communities and Local Government**
<http://www.communities.gov.uk/>
- **Planning Advisory Service**
www.pas.gov.uk

City of Bradford Metropolitan District Council

www.bradford.gov.uk

Contact Information

Local Development Framework Group

- local.development.framework@bradford.gov.uk
- ldf.consultation@bradford.gov.uk
- 01274 434050

8.0 PROMPT SHEET

Workshop Session 1 – Prompt Sheet

The facilitator should ask all delegates to briefly introduce themselves (i.e. name, the organisation they represent and what their interest is in planning).

The facilitator should state that their role is to encourage debate and to inform the group that a note will be taken of the meeting - but that this will be a general note and not attributable to individuals.

Developing a Vision for the Bradford District

The aim of this workshop is for delegates to give their views on the planning issues that should be contained within the Core Strategy spatial vision.

The following issues have been placed on cards as a series of 'unloaded' headers, with the aim of group's ranking each according to whether they feel they are of high or low importance. Each card will need to be ranked on an A0 foam board. The cards are of the big issues facing the district and are what we think the document should be tackling. The cards are of big issues and are as follows:

- Growing local economy
- Socially inclusive and vocal communities
- Choice of housing opportunities
- Role of the City Centre
- High quality design
- Historic and the natural environment
- Access to public transport
- Transport infrastructure investment (connections within and outside district)
- Role of Regeneration
- Role of the Green Belt
- Access to leisure and recreation
- Access to housing, employment, shopping, health, culture and education
- Climate change
- Sustainable waste management
- Natural and renewable resources

(The above list has been lifted from section 4, Para 4.4 of Topic Paper 2)

Delegates should be encouraged to add any issues that they feel we have missed.

Ask questions such as:

Q. What does this issue mean to you in terms of Bradford?

Q. How important is this issue?

Q. Have we missed any issues that you think are important and should be included?

At the end of the workshop a digital photo will need to be taken of the board – as it will be used again at the other events.

Workshop Session 2 – Prompt Sheet

Location of Development & The Role of Settlements in Meeting Needs for Employment & Housing

The aim of this workshop is for delegates:

- a) To devise an approach to locating development for housing and employment across the district, and
- b) To think about the role that each settlement will play in meeting needs for housing and employment.

In this workshop delegates will be asked to place counters on an A0 foam board. For housing, each colour counter represents a different number of houses. Housing counters should tally up to approx 31,000¹ dwellings. (31,000 dwellings + housing requirement figure in draft RSS to 2021)

In terms of employment, the RSS recognises Bradford as one of the main drivers in delivering a growing regional economy. E.g. each day more people travel to Bradford district to work then leave to work elsewhere. Over 80% of firms within the district are smaller, made up of 10 employees or less. Employment counters are of various colours these refer to the no of employees and do not need to tally, as there is no specific requirement for employment.

Location of Development

The facilitator should introduce the workshop by referring to the 31,000 dwellings. The aim of the workshop is to come up with an approach on how these should be distributed across the district,

The facilitator does not need to go into each of the spatial strategy options identified in Topic Paper 2, Section 5, para 5.10 – 5.14 when introducing the workshop, as this would be steering the debate. However on a personal level the facilitator will need to know the Core approach² (para 5.11). This states that development should be:

- **Focused within Bradford City, Shipley & Baildon** – due to good transport connections.
- **Larger settlements in Airedale (Keighley, Bingley & Silsden)** – Focus for economic development and limited residential development to meet local needs.
- **Larger settlements in Wharfedale (Ilkley, Menston, Burley)** – limited economic developments and limited residential developments to meet local needs.
- **Other well located larger settlements on the urban fringe (Queensbury, Thornton)** – limited economic development and limited residential developments to meet local needs.
- **Small less well-located villages (Cullingworth, Wilsden & Oxenhope etc)** – limited economic development and limited residential development to meet local needs.
- **Priority in all above cases to previously developed land unless a Greenfield location is more sustainable.**

¹ Please note that this figure is likely to rise, in the final RSS, by an extra 3,000 dwellings based on more recent population projections.

² The Core Strategy Preferred Option may have apportionments for housing in each of the above areas as this appears to be the approach that the Government Office is promoting.

The facilitator should get delegates to think about all the above areas in meeting needs for housing and employment and not just their own locality.

Option A – C (para 5.13) are variations of the Core Approach. Briefly,

Option A – Focused Dispersal

- Focus development in main urban area of Bradford (intensification)
- Development on allocations in lower order settlements with good transport infrastructure
- Use of safeguard land

Option B

- All settlements make provision to meet district's needs

Option C

- New development focused in key locations potentially involving substantial changes to the Green Belt.

Role of Settlements

Delegates should be asked to think about the role of settlements in meetings needs for housing and employment. The following location principles could be used as a guide:

- Should the majority of development take place in the existing built up main urban area?
- Should smaller settlements on good transport routes provide a commensurate level of development?
- Should development in less well-located smaller settlements be limited to meet local needs?
- Accessible locations for new development
- Priority to previously developed over Greenfield land.

Once delegates have come up with an approach the facilitator will need to discuss the implications of such an approach. For example,

- If some settlements have no housing development this will have implications for affordable housing, local 1st time buyers may have to move away, etc.
- Green Belt releases on edge of main urban area if Bradford is chosen as the only location.
- Should employment land be allocated/continue to be protected within villages?

At the end of the workshop a digital photo will need to be taken of the board – as it will be used again at the other events.

9.0 FACILITATORS NOTES

WORKSHOP SESSION 1:	Key Issues
TIME:	10.00 to 10.45
GROUP:	A
FACILITATOR:	Andrew Marshall
NOTE TAKER:	Ali Abed

The main points raised and issues discussed in the workshop are as follows-

- The future of Bradford needs to be managed well- taking the lessons from past failures and keeping the current needs and trends in mind. If the city is mismanaged we'll regret it later.
- Development should ensure a balance between built-up areas and urban spaces. We do not want our city to develop as a 'one-stop' area by the motorway but a prosperous city with business and leisure opportunities as well as quietness and peace.
- Development on Brownfield land/site is very important. Buildings/sites that are currently hidden and/or poorly maintained need to be put back to use.
- Development should focus on larger settlements keeping their geographical extent and identity intact. It is very important to keep the greenbelts along the highway corridor and around the settlements.
- Some delegates however argue that if demand arises for development on greenbelts, we should allow measured developments in selective areas.
- Historic buildings and areas e.g. conservation areas, listed Victorian buildings, old battle fields etc. are a great asset to Bradford. Lots of foreigners visit Bradford every year to see these unique heritage and they need to be preserved and cared with utmost importance.
- Mills are a part of Bradford's grand heritage. Pulling them down for development means pulling our history down.
- Access to public transport and increased investment in transport infrastructure and services are important. Most of the high-paid jobs are concentrated in Leeds, and Bradford has failed to get them out because of its poor transport network and under capacity of public transport services during peak times.
- Bradford lacks quality shops and evening leisure facilities.
- The general topography of Bradford city centre is also a major disadvantage particularly for the elderly shoppers. People tend to go to Leeds, Halifax instead because they are on level ground and have quality shops.
- The bars and clubs are concentrated in one area of the city centre which is easy for policing but it makes the other parts of the city centre virtually dead in the evening - a 'no-go' area for visitors.
- High quality planning design is important, particularly in the city centre. We do not want everything packed in a small area. We need an area with fair amount of bars, cafes, places to rest and to have our lunch etc.
- Bradford is well set with its urban green spaces and parks. Moreover, what Bradford has got that Leeds does not have is enough spaces in the city centre. These spaces could be better arranged, designed and managed to accommodate the above facilities.
- Sustainability should be assured in program building and in all stages of development.
- Young people are increasingly failing to keep house ownership and queuing up in the social housing list. This is causing further delay to vulnerable groups who are in real need of housing.

- Out of use and/or underused housing stocks in certain areas need to be released as early as possible. Council should put pressure on the owners or use compulsory purchase act to ensure better use of these housing resources.
- The council tax is already too high. It is very important to keep the council tax lower or stop from increasing.
- Adopting sustainable waste management techniques is also very crucial for Bradford as the city is experiencing a strong population growth and has potentials for large-scale economic development.
- More need to be done on energy efficiency and use of renewable energy sources in houses and businesses.
- The issue of tackling climate change is also quite important.

DEVELOPING A VISION - KEY ISSUES

IMPORTANCE

LOW ← → HIGH

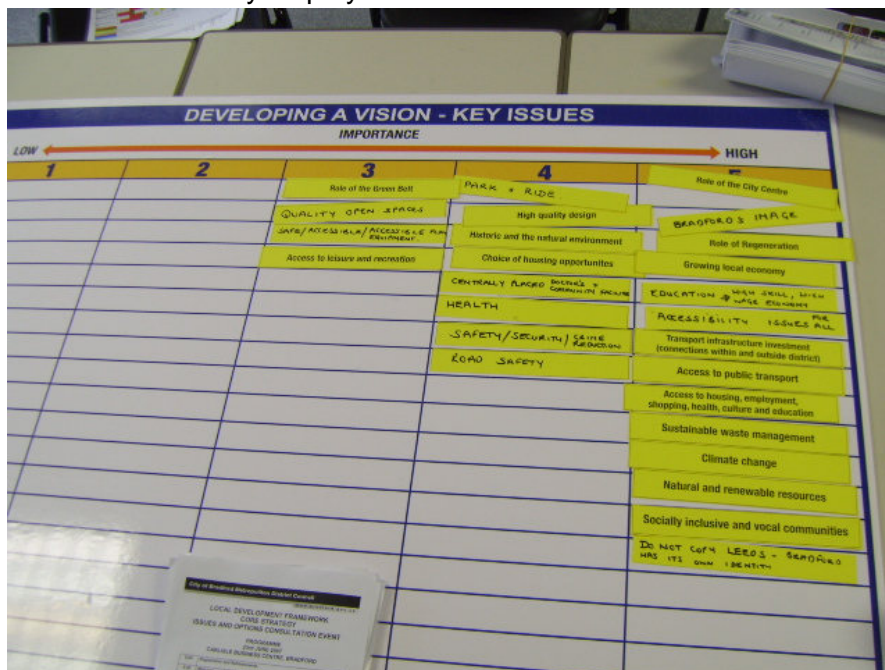
1	2	3	4	5
Socially inclusive and vocal communities		Sustainable waste management		Access to public transport
		Climate change		Transport infrastructure investment (connections within and outside district)
		Natural and renewable resources		
		Access to leisure and recreation	Role of the City Centre	
			High quality design	
		Historic and the natural environment		
			Role of the Green Belt	
				Choice of housing opportunities
				Access to housing, employment, shopping, health, culture and education
			Role of Regeneration	
			Growing local economy	

WORKSHOP SESSION 1: Key Issues
TIME: 10.00 to 10.45
GROUP: B
FACILITATOR: Isha Ahmed
NOTE TAKER: Tom Walton

The main points raised and issues discussed in the workshop are as follows-

- The City Centre gives the feel for the whole district – Bradford offers nothing at the moment.
- Bradford has a terrible image – Centenary Square should be used vibrantly for 7 days a week. There is a lack of promotion of events in Centenary Square.

- Bradford does not want to go down the Leeds route needs to be distinct in its identity.
- Education is key to the local economy – Bradford characterised by a low wage/low skill economy.
- Disabled people have an accessibility problem there is a role to play of the Park and Ride Tram.
- Is the Greenbelt too much of a restraint on development? Although there is still a lot of Brownfield and derelict land to develop in the district. Open spaces could be reassessed for development – why protect them if they are not used? – Quality not quantity of Open Space is important and accessible play areas.
- Bradford transport infrastructure is key and innovative solutions are needed
- Public Transport – some parts of the district are good some not. Better access and frequency of transport would encourage more use. There is also a lack of parking.
- Children Transport after school hours is a problem – should social clubs be located into the local facilities?
- Climate Change/Sustainable Waste/Natural Renewables is a key issue
- Problem of apathy of the public to local issues – council should take a higher profile instead of delegating role to external bodies.
- High quality design very important we should not repeat what has happened in the past and demolish old buildings – what about the Odeon site?. We need to make sure we make the best use of the past and merge them with the new.
- Leeds seems to look at the merits of each site whereas in contrast Bradford seems to be more Masterplanning.
- Are conversions of mill buildings necessarily a good thing – mill conversions are more orientated to the professional worker and not families – many of the people living in the city apartments may be working in Leeds. Could we be creating the slums of the future? – these apartments look fine now.
- Access to leisure and recreation depends on good transport as does access to health facilities. Centrally placed health facilities are very important.
- High quality design in the district is very important – possibly tree lined avenues.
- As regards road safety – speed humps are ineffective – speed limits should be more effectively displayed.



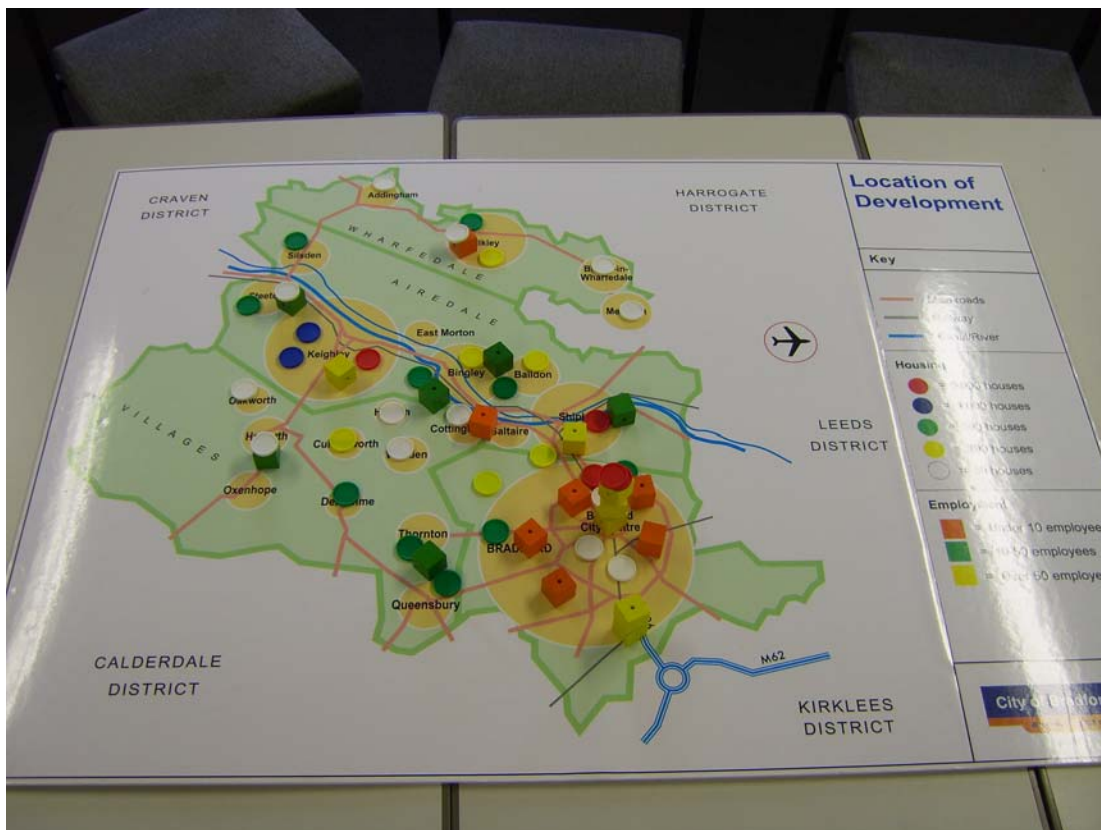
Core Strategy Issues & Options – Bradford Stakeholder Event Report

WORKSHOP SESSION 1: Location of Housing and Employment
TIME: 11.00 to 12.30
GROUP: A
FACILITATOR: Andrew Marshall
NOTE TAKER: Ali Abed

The main points raised and issues discussed in the workshop are as follows-

- City centre and larger settlements should accommodate the majority of new houses and job opportunities.
- City centre housing developments should ensure a balance between houses, green and community facilities and should aim at achieving a strong social structure and community connection.
- Some delegates, on the other hand, argued that in order to attain better community cohesion and integration new housing developments should rather be pushed out of the city centre towards the surrounding areas.
- Apart from the city centre, new housing developments should be promoted on areas with good economic concentration e.g. Keighley, Shipley, Ilkley etc but should not be pushed much to the north of the district e.g. Addingham, Burley, Menston etc.
- Nobody lives over the shops now a day. These vacant premises should be brought back into use as housing units.
- Hospital and major transport infrastructure (rail station, interchange etc) are key catalysts in attracting concentration of population/housing in a particular settlement and its surrounding. So all such facilities should be carefully placed to achieve a better and sustained community profile.
- Location of schools is very important as they shape up the size and mix of different communities. They should be better placed and well connected to the local community.
- As long as the potential sites are located in areas served by good access and transport links, the other relevant facilities will grow up automatically.
- Although public transport service has improved in Bradford, there is still a major need to develop a sound transport network across the district and beyond. It is absolutely vital to develop a long-term strategy to ensure that new developments will be facilitated by a good transport network and service infrastructure.
- Bradford's terrain is not friendly for cycling. It is a major obstacle to encouraging less use of cars.
- Redevelopment of Brownfield sites is very important. The council should initiate a land upgrading program (in which the council will provide the design strategy, access, sewerage and water supply facilities) to make the private owners develop their sites for housings.
- Canal Road Corridor development-what type of housing will be there and who will be living? What type of and how much demands will it create for new employments and community facilities?
- Area along the Canal Road Corridor is already built up. Every mill adjacent to the canal/river is developed. Not much potential left for new large scale development.
- Circulation of money is needed. Small-scale projects are therefore better than the large- scale ones in terms of ensuring better local engagement in businesses and investment.
- The council has failed to make the big developers invest their profits locally or in local matters.

- It is very important to make the city centre regeneration a success, because if the 'nucleus' does not go right, the developers and businesses will not feel confident to invest in the periphery of the Bradford city centre.
- In other countries there is far more mixed development taking place, which need to be encouraged in Bradford as well.
- It is important to ensure affordability and variety of types in the new housing stocks.
- Bradford's BME community has strong contributions in city's economy (e.g. industries, businesses etc) and they should be much more effectively engaged and consulted in the development of any planning policies and/or strategies.
- The city centre redevelopment is going to be a 'white elephant'. If you can't keep the house/rent prices low, the BME community will not come to the city centre to join as a living community.
- Nothing significant has been started yet in terms of mill conversion in Keighley. Once it'll get a go, it'll potentially accommodate a large number of new homes.
- Harden, Cullingworth and Wilsden need a bit more breathing space to survive.
- Both Holmewood and Buttershaw are large settlements but they lack appropriate and adequate facilities to support businesses and housings that already exist.
- The council should sell its houses at subsidised/going price to increase take-ups. People are not interested to let but to buy. The 'buy to let' is not working properly in Bradford. It is just influencing the house prices to go up.
- Local shops e.g. news agents, small garages etc are increasingly getting less viable. Impacts of supermarkets?
- Old quarries need to be better used. They should be redeveloped for housing.
- It is essential to engage high profile political figures/decision makers into discussions like this in order to give them first-hand knowledge of the feeling among the grassroots about different development agenda.

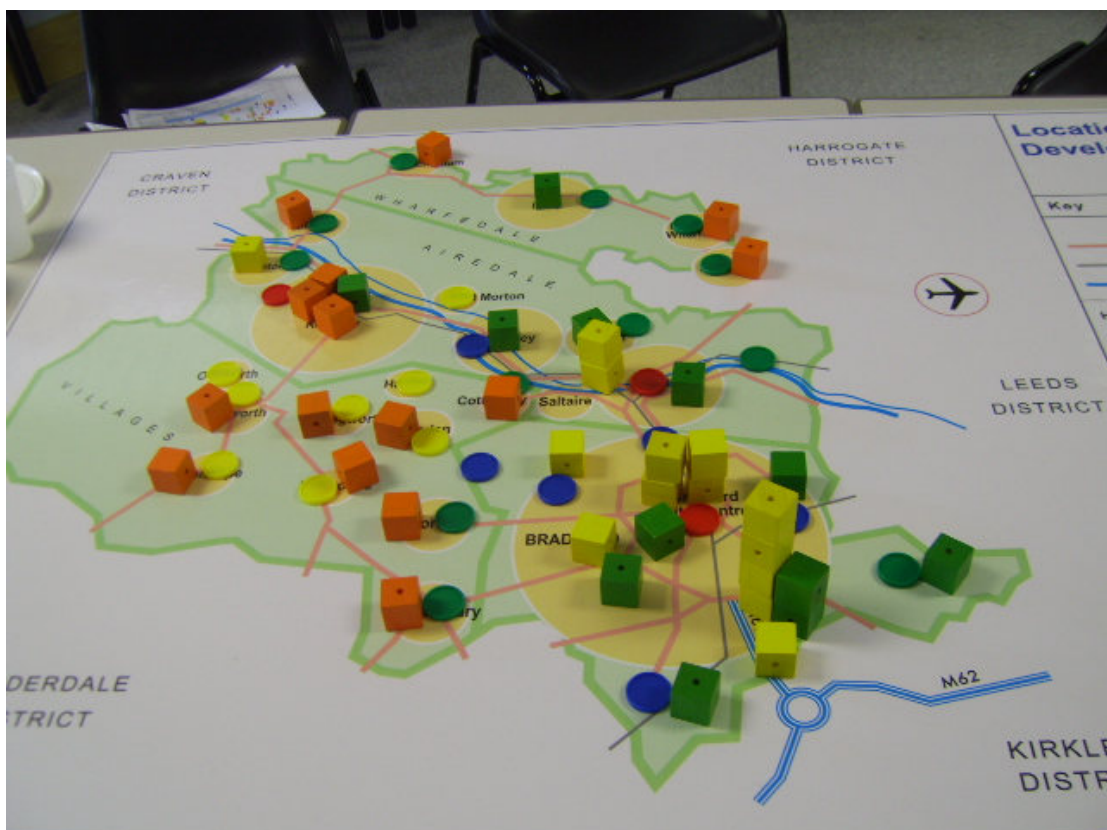


WORKSHOP SESSION 1: Location of Housing and Employment
TIME: 11.00 to 12.30
GROUP: B
FACILITATOR: Isha Ahmed
NOTE TAKER: Tom Walton

The main points raised and issues discussed in the workshop are as follows-

- There is a need for an additional 31000 houses in the district over the plan period to be split between different types of housing
- When considering where housing goes it is important to consider whether we can provide the transport, health and other facilities in the area. Need to consider this first then the housing will follow
- Denholme/Thornbury/Queensbury could be good areas to take some of the housing as road links are quite good.
- Wyke area has good transport links – could the Bailiff Bridge area be the location of a new settlement area – good transport links. Heaton would also possibly make a good new settlement area.
- Thought that the LDF should incorporate the UDP sites. It was explained that because some sites will have been developed and policy changed, that these sites will need to be reviewed.
- The canal area from Shipley to Steeton could take could take some more houses.
- Impact on schools depends on the type of housing development. Allerton could be the location for another 1000 houses.
- Dispersed housing around Bradford (ie the villages) with housing concentrated in certain areas such as Bradford City Centre (5000+) /South Bradford/Wyke (1000)
Allerton (1000)
- Capacity of the villages to take more housing is limited.
- Hierarchy of concentration should be
Bradford/Keighley/Shipley
Allerton/Wyke/Tyersal
Canal Area/Larger villages
Smaller Villages
- Using techniques such as stilts for building on the Flood Plain should be seriously considered.
- Shipley/Saltaire road congested – good development and landscaping may overcome the problem of loosing Open Space. All bits of evidence for example Open Space, Urban Potential etc should be factored in.
- Landowners have a big influence on where land is released – the use of more CPO's should be considered.
- Elderly people's accommodation needs to be located near facilities/City Centre etc.
- Climate change/Carbon emissions need to be taken into account.
- Bradford does not have a good Conference Centre and needs one
- Local/Cottage industries important.
- There should be large concentrations of employment around West Bowling/M606 (including Conference Facilities). The city centre should mainly be for office development.
- Residential could be built on top of offices.
- Airedale Corridor will not take off if By-pass to Shipley not built.

- Leisure clubs are growing areas of employment and need to be accessible.
- Tourism should be supported especially in the smaller villages – should Thornton now be a focus for Tourism.
- Can old mills be converted into Hotels ?
- Hierarchy by Employment concentration
 - Bradford City Centre
 - M606
 - Keighley
 - Shipley
 - Villages
- Mills – start up businesses should be on lower floors and residential on the upper levels.
- If there is a conference centre in Bradford then there is a case for smaller conference centres in villages such as Menston/Burley etc
- Could have a rail link going straight into a conference facility – this would create more jobs.
- There should be large hotels near the Airport.
- New housing settlement could be proposed in Wyke but employment allocations should also be made to make it more sustainable – M606 corridor could take more development.
- Lighting also a big issue – safety/security/design. Energy Efficient homes also needed.



10.0 EVALUATION FORM

LDF CORE STRATEGY – ISSUES AND OPTIONS STAKEHOLDER CONSULTATION EVENT

Please spend sometime to fill in the form below. Your feedback will help us to improve future events. Thank you.

Presentations/ Speakers

Was the level of detail provided appropriate?

1 = not enough detail and 5 = too much detail (please circle)

1 2 3 4 5

Were the presentations an appropriate length?

1 = too short and 5 = too long (please circle)

1 2 3 4 5

Please rate the overall quality of the presentations and speakers

1 = poor and 5 = excellent (please circle)

1 2 3 4 5

Was the content of the DVD appropriate for the event?

1 = not enough detail and 5 = too much detail (please circle)

1 2 3 4 5

Workshop Sessions

Were the workshops an appropriate length?

1 = too short and 5 = too long (please circle)

1 2 3 4 5

Please rate the overall quality of the facilitators

1 = poor and 5 = excellent (please circle)

1 2 3 4 5

Organisation

Please rate the overall organisation and management of the event on the day

1 = poor and 5 = excellent (please circle)

1 2 3 4 5

Please rate the communication and background material provided leading up to the event

1 = poor and 5 = excellent (please circle)

1 2 3 4 5

Venue

Was the venue convenient and easy to get to?

1 = poor and 5 = excellent (please circle)

1 2 3 4 5

Please rate the overall quality of the venue?

1 = poor and 5 = excellent (please circle)

1 2 3 4 5

Please identify the best features of the event

.....
.....
.....
.....
.....

Please identify any areas for improvement

.....
.....
.....
.....
.....
.....

Thank you once again for your time, please hand this sheet in

11.0 EVALUATION ANALYSIS

LDF CORE STRATEGY – ISSUES AND OPTIONS BRADFORD STAKEHOLDER CONFERENCE 19 MAY 2007

CARLISLE BUSINESS CENTRE, BRADFORD

RESULTS

One feedback form was completed and returned.

QUESTION	RESULTS				
	1	2	3	4	5
Presentations/ Speakers					
Q1) Was the level of detail provided appropriate? (1 = not enough, 5 = too much)	0	0	1	0	0
Q2) Were the presentations an appropriate length? (1 = not enough, 5 = too much)	0	0	1	0	0
Q3) Please rate the quality of the presentations and speakers (1= poor, 5 = Excellent)	0	0	0	1	0
Was the content of the DVD appropriate for the event? (1= not enough detail and 5= too much detail)	0	0	1	0	0
Workshop Sessions					
Q4) Were the workshops an appropriate length? (1 = too short, 5 = too long)	0	0	1	0	0
Q5) Please rate the overall quality of the facilitators (1= poor, 5 = Excellent)	0	0	0	1	0
Organisation					
Q6) Please rate the overall organisation and management of the event on the day (1= poor, 5 = Excellent)	0	0	0	1	0
Q7) Please rate the communication and background material provided leading up to the event (1= poor, 5 = Excellent)	0	0	0	1	0
Venue					
Q8) Was the venue convenient and easy to get to? (1= poor, 5 = Excellent)	0	0	0	0	1
Q9) Please rate the overall quality of the venue? (1= poor, 5 = Excellent)	0	0	1	0	0

ANALYSIS

Presentations/ Speakers

The session scored well and it was praised for allowing time for sharing information and ideas.

Workshop Sessions

The workshop sessions were considered to be the highlight, but would have been better to have a greater length of time to discuss the issues.

Organisation

The organisation of the event was deemed to be of a very good standard.

Venue

The venue scored very highly in terms of its accessibility.

BEST FEATURES OF THE EVENT

The best feature of the event was deemed to be the workshops enabling people to share ideas and debate.

AREAS FOR IMPROVEMENT

Encouraging more people to attend the events to stimulate a better debate.

CONCLUSIONS/ LEARNING POINTS

- Points of debate could have been more specific to avoid the discussion going off topic and over-running the time period which was allocated.

Produced by the
City of Bradford Metropolitan
District Council

Local Development
Framework Group

Summer 2007

